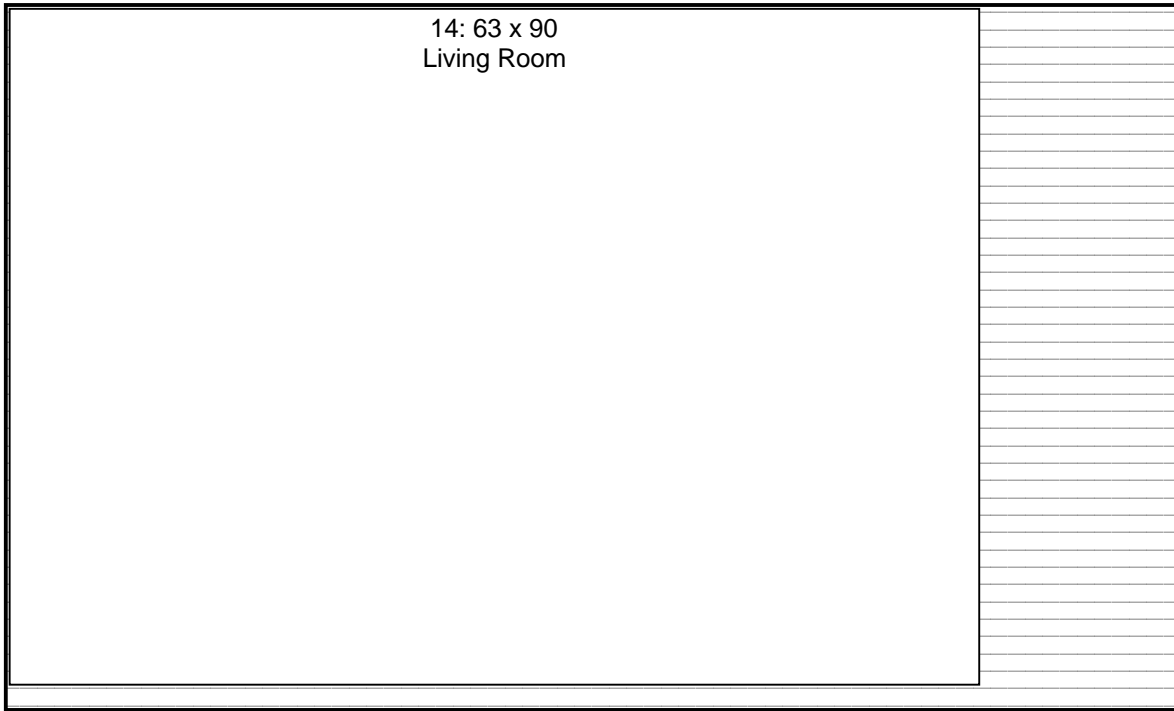


Sample Customer Cutting Diagram

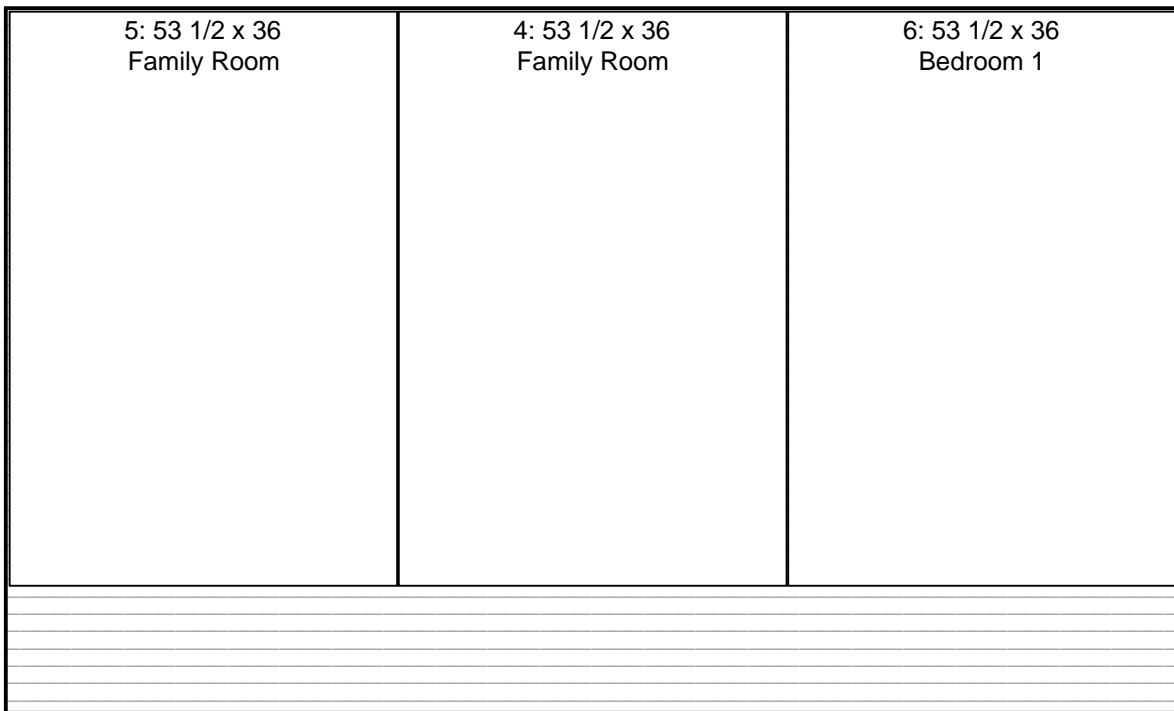
Parts List

Part #	Description	Copies	Thick	Width	Length	Material Name	Can Rotate
1	Kitchen	1	3/8	35 1/4	36	Original 3/8" Translucent Storm Stoppers	Yes
2	Kitchen	1	3/8	35 1/4	36	Original 3/8" Translucent Storm Stoppers	Yes
3	Bathroom	1	3/8	35 1/2	24	Original 3/8" Translucent Storm Stoppers	Yes
4	Family Room	1	3/8	53 1/2	36	Original 3/8" Translucent Storm Stoppers	Yes
5	Family Room	1	3/8	53 1/2	36	Original 3/8" Translucent Storm Stoppers	Yes
6	Bedroom 1	1	3/8	53 1/2	36	Original 3/8" Translucent Storm Stoppers	Yes
7	Bedroom 2	1	3/8	53 1/2	36	Original 3/8" Translucent Storm Stoppers	Yes
8	Master Bedroom	1	3/8	48	72	Original 3/8" Translucent Storm Stoppers	Yes
9	Master Bedroom	1	3/8	60	36	Original 3/8" Translucent Storm Stoppers	Yes
10	Master Bath	1	3/8	36	18	Original 3/8" Translucent Storm Stoppers	Yes
11	Slider Left	1	3/8	36	80	Original 3/8" Translucent Storm Stoppers	Yes
12	Slider Right	1	3/8	36	80	Original 3/8" Translucent Storm Stoppers	Yes
13	Living Room	1	3/8	63	90	Original 3/8" Translucent Storm Stoppers	Yes
14	Living Room	1	3/8	63	90	Original 3/8" Translucent Storm Stoppers	Yes

Sample Customer Cutting Diagram

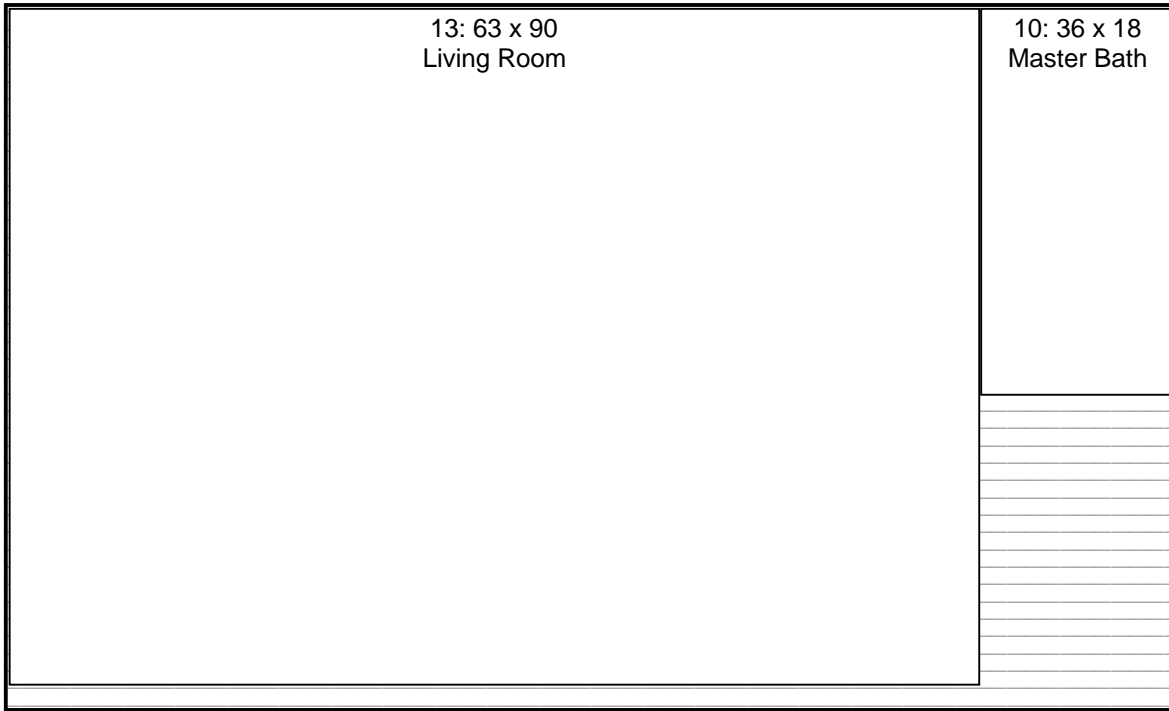


Original 3/8" Translucent Storm Stoppers: 3/8 x 65 x 108 1/4				Vendor:	Bin:
1 of 3 this size		Grain: Horizontal	Stock Trim: 0::0	Standard Layout	
Kerf: 1/8	Part Padding: 0	Waste: 19.4%	Final Cut Dimensions		

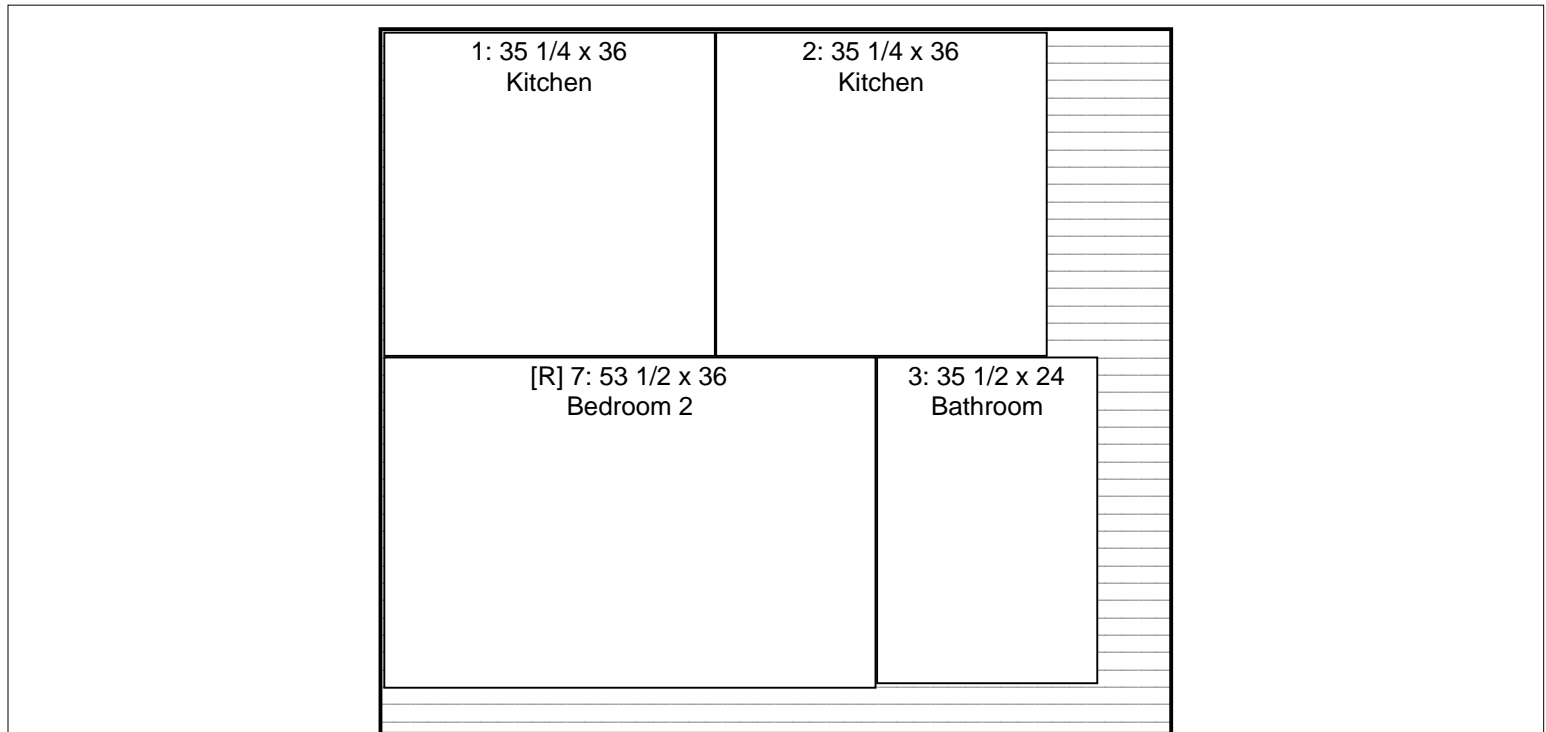


Original 3/8" Translucent Storm Stoppers: 3/8 x 65 x 108 1/4				Vendor:	Bin:
2 of 3 this size		Grain: Horizontal	Stock Trim: 0::0	Standard Layout	
Kerf: 1/8	Part Padding: 0	Waste: 17.9%	Final Cut Dimensions		

Sample Customer Cutting Diagram

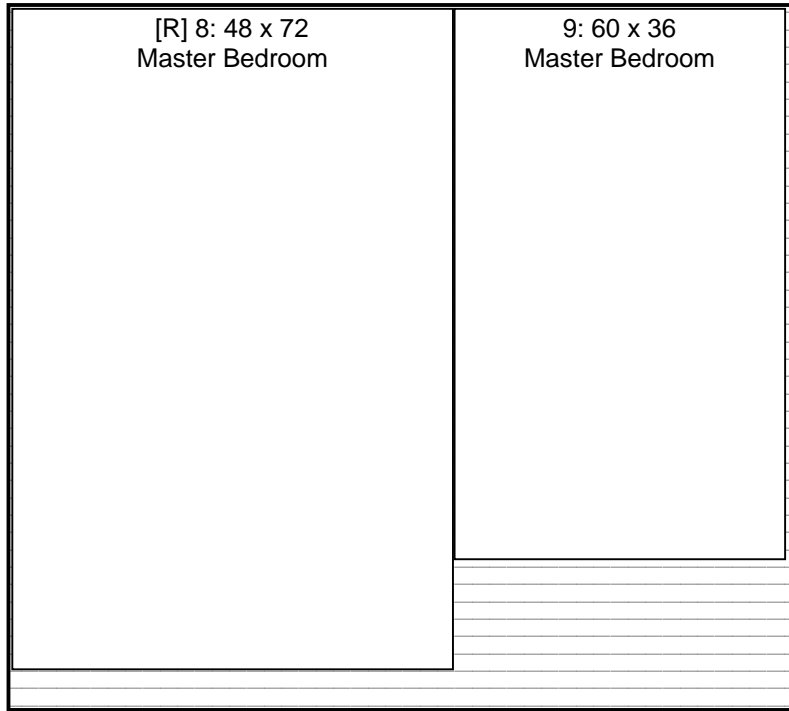


Original 3/8" Translucent Storm Stoppers: 3/8 x 65 x 108 1/4			Vendor:	Bin:
3 of 3 this size		Grain: Horizontal	Stock Trim: 0::0	Standard Layout
Kerf: 1/8	Part Padding: 0	Waste: 10.2%	Final Cut Dimensions	

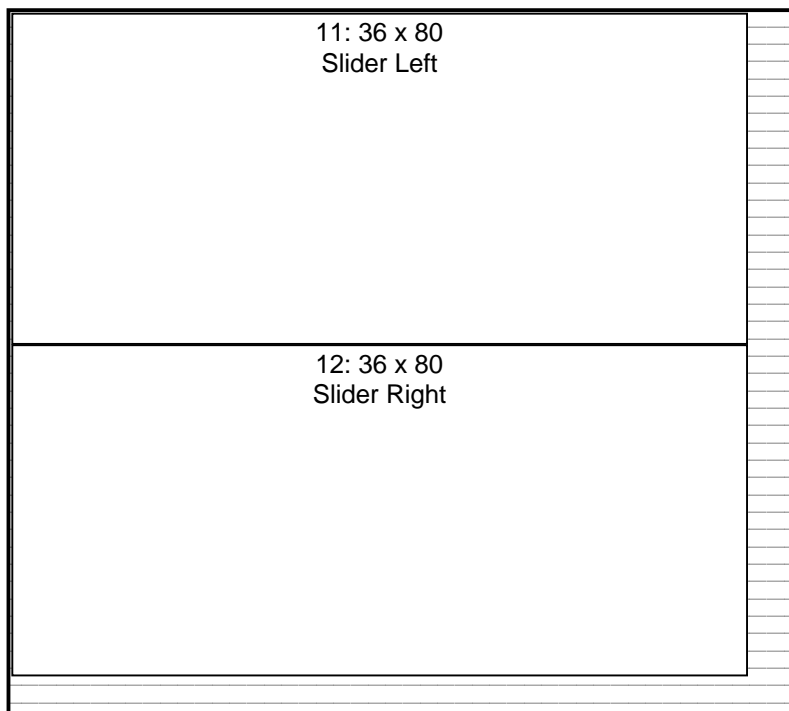


Original 3/8" Translucent Storm Stoppers: 3/8 x 76 x 85 1/4			Vendor:	Bin:
1 of 3 this size		Grain: Horizontal	Stock Trim: 0::0	Prefer Rip-Cuts
Kerf: 1/8	Part Padding: 0	Waste: 18.0%	Final Cut Dimensions	

Sample Customer Cutting Diagram



Original 3/8" Translucent Storm Stoppers: 3/8 x 76 x 85 1/4				Vendor:	Bin:
2 of 3 this size		Grain: Horizontal	Stock Trim: 0::0	Standard Layout	
Kerf: 1/8	Part Padding: 0	Waste: 13.3%	Final Cut Dimensions		



Original 3/8" Translucent Storm Stoppers: 3/8 x 76 x 85 1/4				Vendor:	Bin:
3 of 3 this size		Grain: Horizontal	Stock Trim: 0::0	Prefer Rip-Cuts	
Kerf: 1/8	Part Padding: 0	Waste: 11.1%	Final Cut Dimensions		

Sample Customer Cutting Diagram

Bill of Materials

Cost Summary

Item	Amount
Rough Lumber	\$0.00
Dimensioned Lumber	\$0.00
Sheet Goods	\$0.00
Edge Banding	\$0.00
Other Items	\$0.00
Labor Costs (0.0 hours)	\$0.00
Project Total	\$0.00

Sheet Goods

Material Name	Thick	Width	Length	Unit Cost	Units	Quantity	From Inv.	To Buy	Total Cost	Vendor	Bin
Original 3/8" Translucent Storm Stoppers	3/8	65	108 1/4	\$0.00	Sheets	3	3	0	\$0.00		
Original 3/8" Translucent Storm Stoppers	3/8	76	85 1/4	\$0.00	Sheets	3	3	0	\$0.00		